



NEW CARPARK

584 SMOLLETT STREET ALBURY NSW 2640

Prepared by Leffler Simes Architects

Client: 590 Smollett Street Pty Ltd + Garden Property Developments Pty Ltd

December 2019 Project 3628

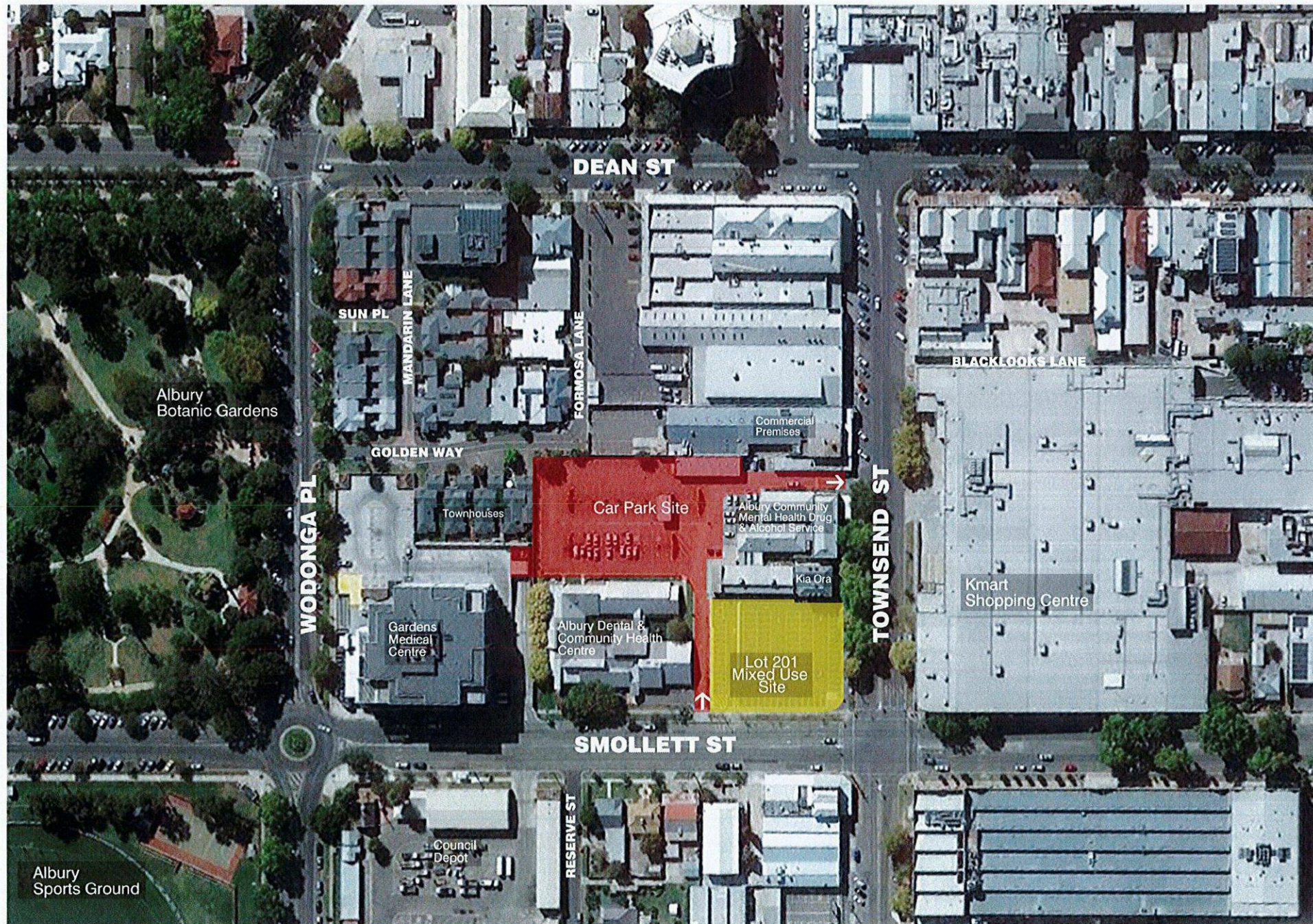
CONTENTS

584DA 01.....LOCATION PLAN
584DA 02.....EXISTING CONDITIONS PLAN
584DA 03.....DEMOLITION PLAN
584DA 04.....GROUND FLOOR PLAN
584DA 05.....LEVEL 1 PLAN

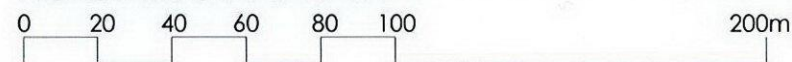
584DA 06.....LEVEL 2 PLAN
584DA 07.....LEVEL 3 PLAN
584DA 08.....LEVEL 4 PLAN
584DA 09.....ROOF PLAN
584DA 10.....NORTH + EAST ELEVATIONS

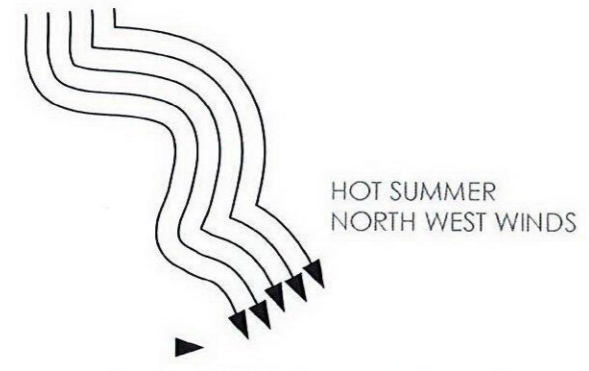
584DA 11.....SOUTH + WEST ELEVATIONS
584DA 12.....SECTIONS AA + BB
584DA 13.....SHADOW DIAGRAM
584DA 14.....VIEWS

LEFFLER SIMES ARCHITECTS



LOCATION PLAN





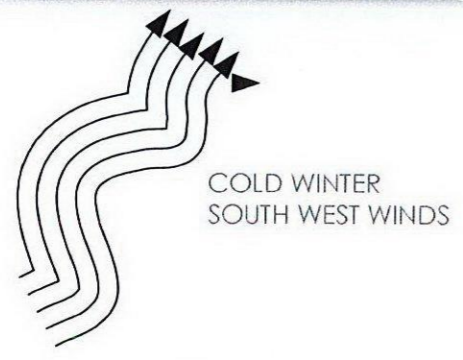
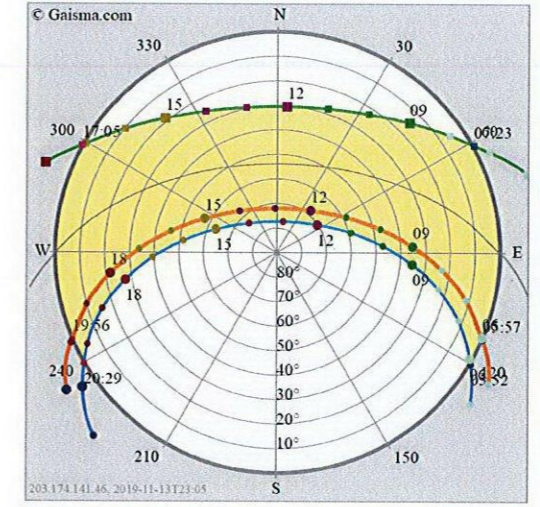
REFER TO DRAWING 3628 DA03 FOR DEMOLITION DETAILS

FUTURE ACCESS TO CARPARK FROM MEDICAL CENTRE

EXIT FROM SITE VIA ONE WAY LANE

KIA ORA HERITAGE SITE REFER SECTION DD

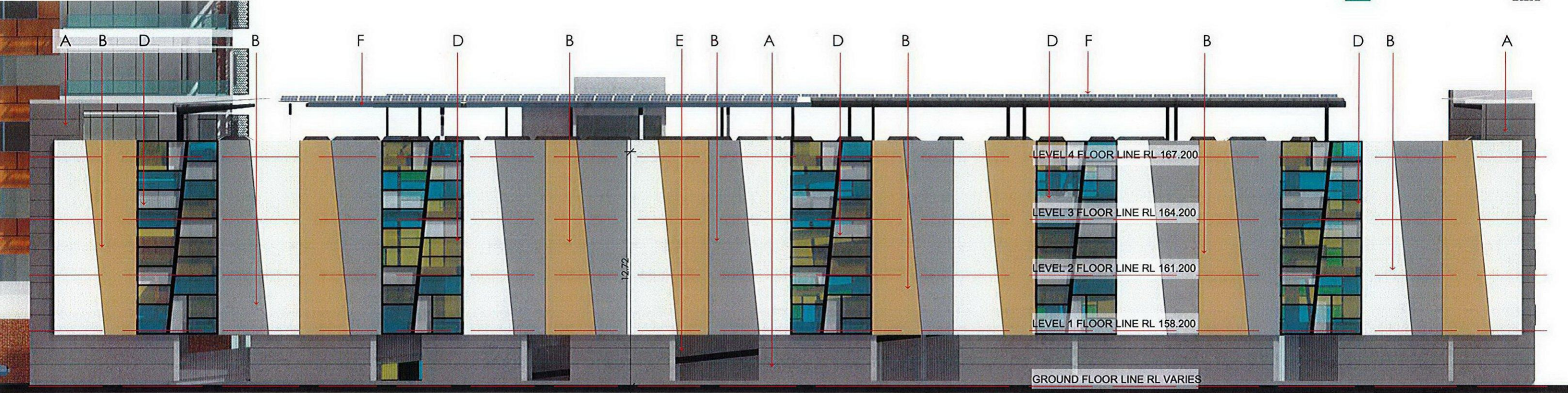
Albury-Wodonga, Australia - Sun path diagram



ACCESS TO SITE VIA ONE WAY LANE

TREES TO BE PRESERVED

DEMOLITION ITEMS TO BE REMOVED:
BITUMEN SURFACE
VEGETATION
SEWER PIT & LINES
SEWER ARRESTOR
ALL UNDERGROUND CONDUITS



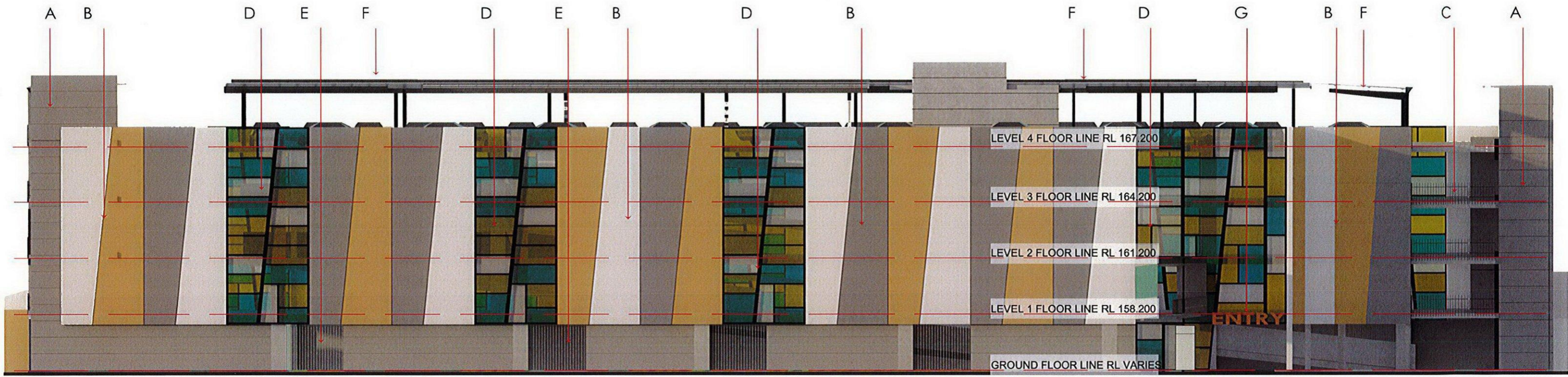
NORTH ELEVATION



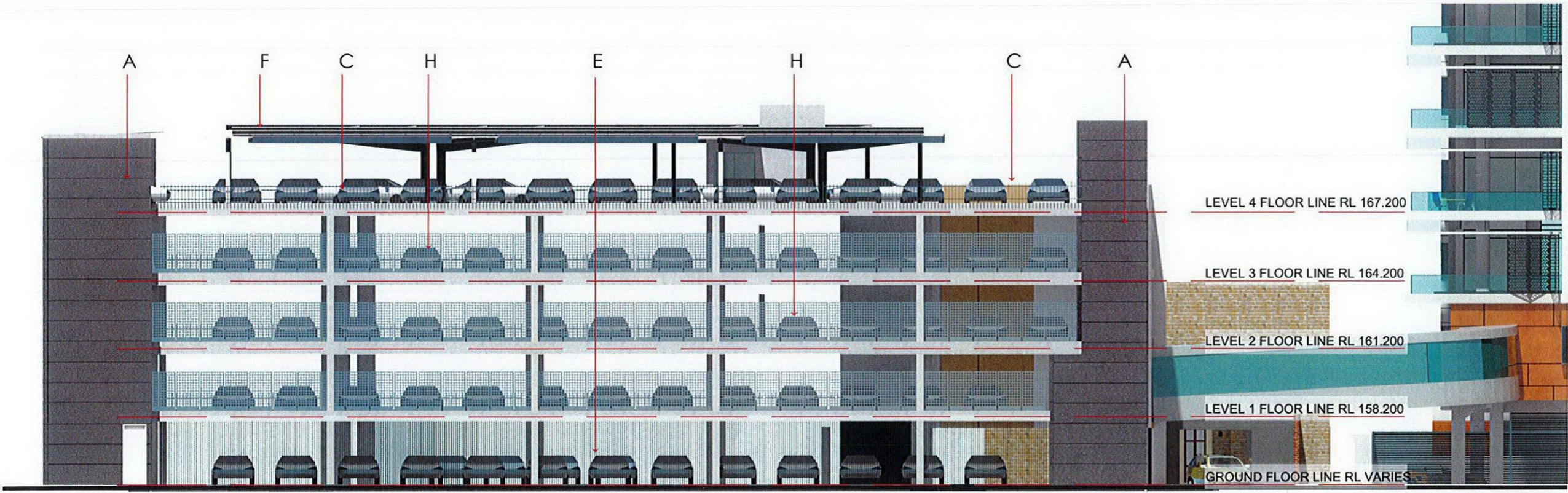
EAST ELEVATION

LEGEND	
A	Concrete wall with horizontal grooves at 900 centres. Paint finish
B	Precast concrete panels in pairs. Double panels 10.1m x 4.35m; selected alternate paint finishes
C	Metal fencing ARC aluminium "Dublin" profile powder coat black.
D	Steel framed panels in same overall size as precast concrete 10.1x4.35). Infill spaces in permetal to different designs. Fire shutters behind permetal. These remain open unless triggered by a fire via a fusible link
E	Full height vertical rods at 125mm centres
F	Steel framed and roofed sun protection structures with PV cells over
G	Signage in 3D letters
H	Permetal screen 1800 high with 20% transparency





SOUTH ELEVATION



WEST ELEVATION

LEGEND	
A	Concrete wall with horizontal grooves at 900 centres. Paint finish
B	Precast concrete panels in pairs. Double panels 10.1m x 4.35m; selected alternate paint finishes
C	Metal fencing ARC aluminium "Dublin" profile powder coat black.
D	Steel framed panels in same overall size as precast concrete 10.1x4.35). Infill spaces in permetal to different designs. Fire shutters behind permetal. These remain open unless triggered by a fire via a fusible link
E	Full height vertical rods at 125mm centres
F	Steel framed and roofed sun protection structures with PV cells over
G	Signage in 3D letters
H	Permetal screen 1800 high with 20% transparency

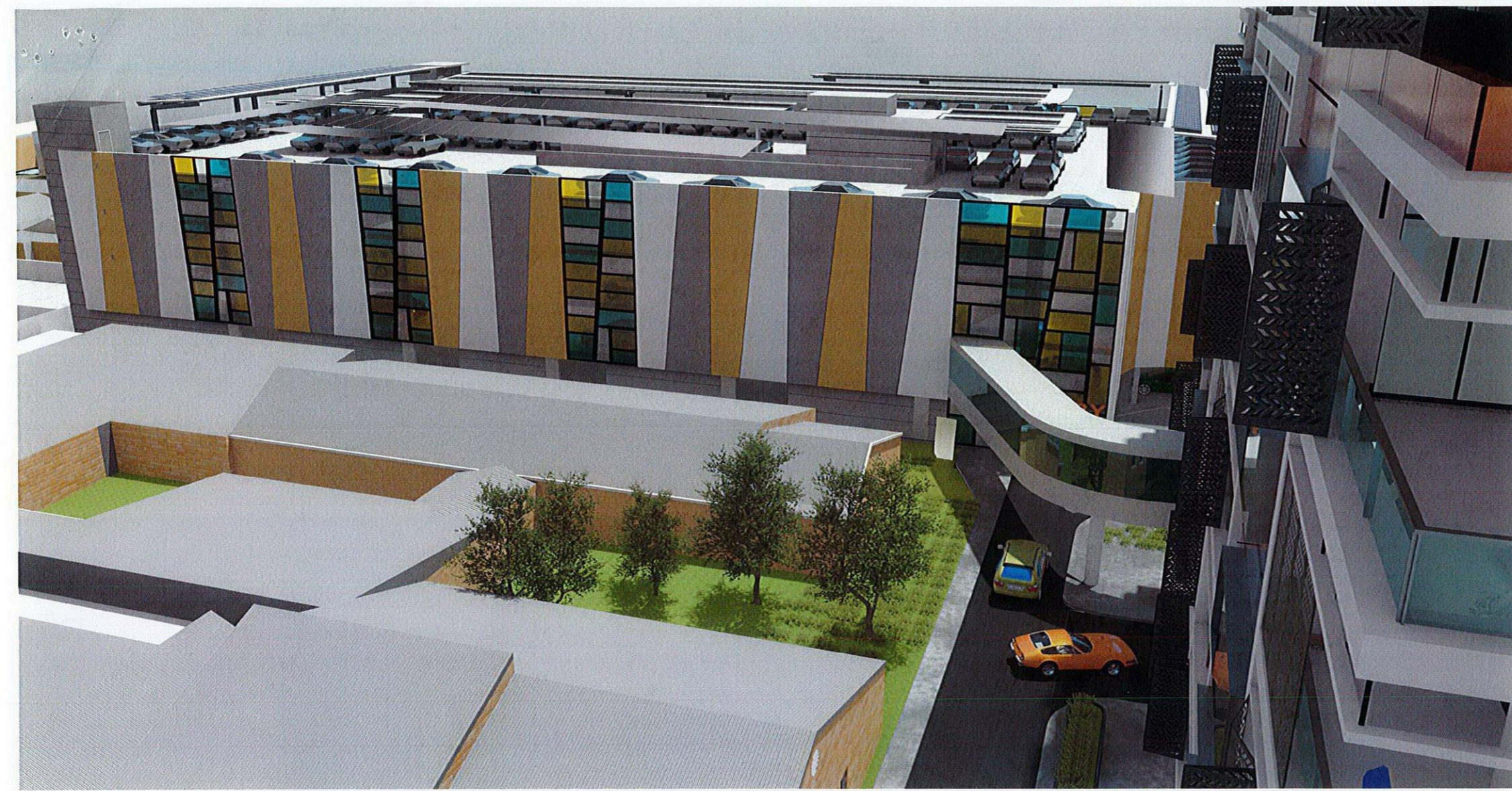


ELEVATIONS 2

THIS DRAWING AND DESIGN IS SUBJECT TO COPYRIGHT AND
MAY NOT BE REPRODUCED WITHOUT PRIOR WRITTEN
CONSENT OF LEFFLER SIMES ARCHITECTS



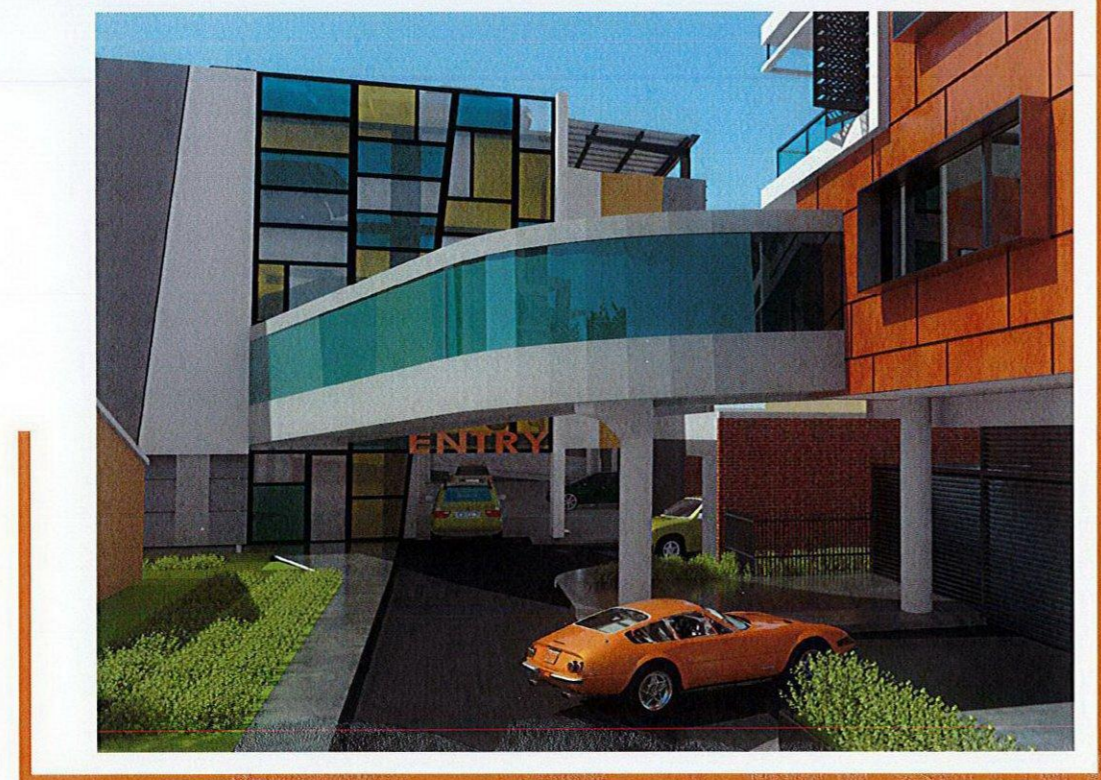
ISSUE	AMENDMENT	DATE	CHK'D
-------	-----------	------	-------



VIEW OF CARPARK FROM SOUTH

IEWS
zauner
construction

VIEW FROM FORMOSA LANE
+ GOLDEN WAY



ARRIVAL VIEW FROM LANEWAY

